

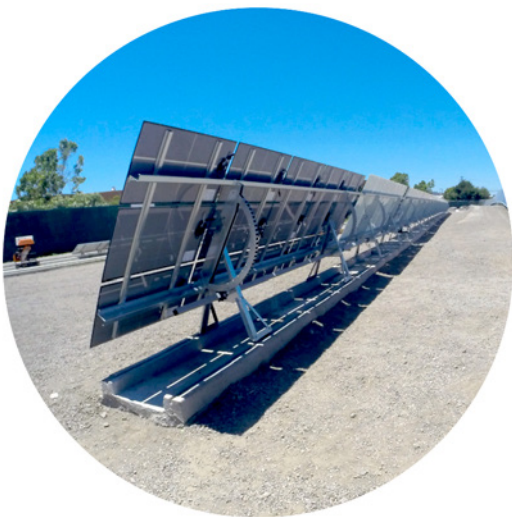


**Storm Tracker** Ballasted Single-Axis Tracker

# Alion Storm Tracker

*The Most Power from PV.*

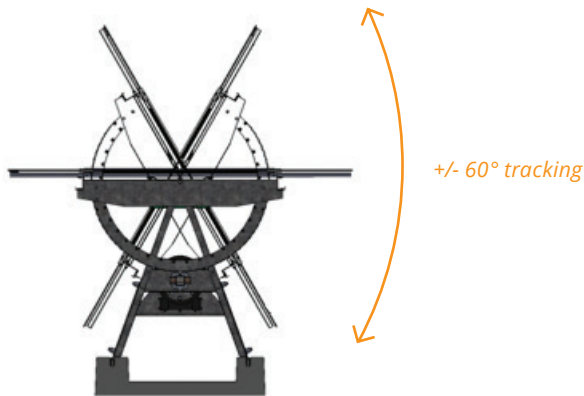
Storm Tracker is a robust ballasted single-axis tracker with automated cleaning robots (optional) for soiling control.



- Fully ballasted, high wind zone and undulating slope capable
- Half of the steel of torque tube based trackers
- 30% more panels per drive than typical torque tube systems
- Automated cleaning with robotic technology (see information for SPOT)
- Framed or frameless modules compatible, including thin film, and bifacial
- Ideal solution for rocky, hard, dusty and other challenging environments

# System Information

The primary components of the Storm Tracker are a continuous, jointed concrete track supporting a unique A-Frame structure with an Arc Drive, purlins, drive shaft and flexible coupling joining tables. Major parts are factory pre-assembled to reduce field labor and allow for all parts to be installed by 2 people.



## Performance

Single-Axis rotation greater than +/- 60°  
Ballasted system can traverse up to 15% slope  
A single drive can operate up to 120 72-cell modules

## Strong A-Frame and Arc Structure

Storm-Lock disengages drive line during stow event  
Up to 4500 N (1000 lb) rated capacity per module

## Multi-function Concrete Track

Ballast avoids ground penetration and cuts pile foundation scope  
Track provides driving platform for cleaning robot eliminating potential micro-crack creation for excessive module loads  
Isolates and protects steel structure

## Grounding and Wire Management

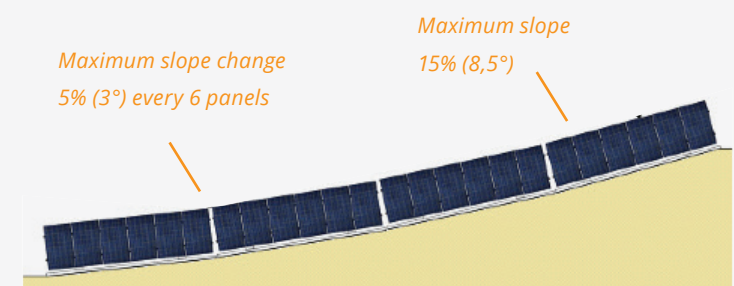
The grounding system is designed for compliance with UL 2703. Wire management is simple and integrated into the structure design.

## Warranty

30 Year Limited Product Warranty



# Technical Information



## Design Standards

Loads: ASCE 7  
Concrete Track: ACI 318 - Structural Plain Concrete  
Integrated Metal Support: AISI S100  
Bonding and Grounding: NEC, UL2703

## Envelope Design Specifications

Module type: Framed and frameless  
ASCE 7-10 wind speed: up to 58m/s (130MPH)  
Seismic peak ground acceleration: up to 0.56  
Environmental range: UL 2703  
Corrosion classes: C1/C2 standard, option for C4  
Bonding and grounding: UL 2703  
String voltage: up to 1500 V  
Module amperage: up to 15 amps

## Materials

Concrete Track: ACI 318 Compliant  
Cold Formed Steel: ASTM A653M SS Grade 50 – G90 and greater  
Structural Epoxy: Hilti RE-500 SD & equivalents

## Testing

Wind Tunnel Study by RWDI Engineers; ASCE 7-10 standards.  
Independent Engineering Assessment: Black & Veatch

